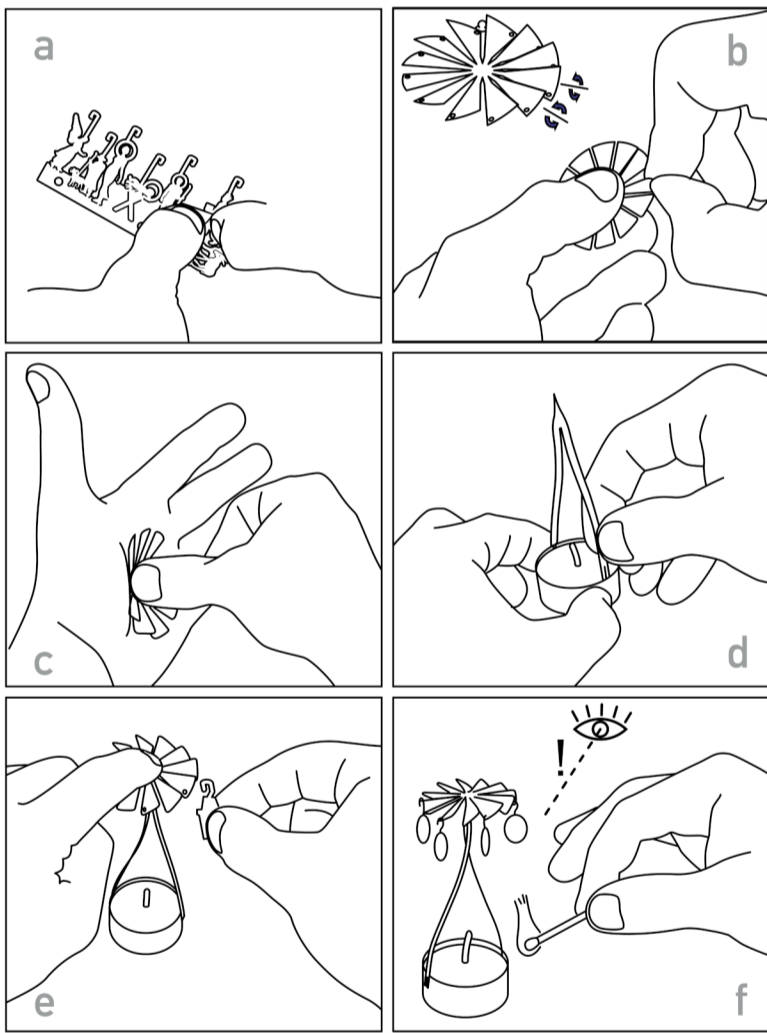


Pyramiden - Tänze
pyramide rotary candle carousel



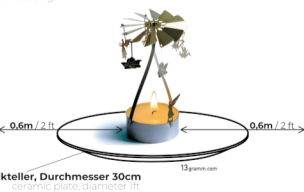
pyramide rotary candle carousel
Pyramiden - Tänze



Pyramiden - Tänze
pyramide rotary candle carousel

Assembly instructions pyramids (rotary candle play)

- a. Break off the individual parts of the metal contour
 - b. Twist the wings so that the holes are aligned facing down
 - c. Important! Press the impeller as shown
 - d. Insert the frame as shown in the drawing placed on the edge of the tea light aluminum bowl.
 - e. Hang the individual parts on the impeller
 - f. Light the candle with stick lighter or a long match
- Tip: The rotation speed can be adjusted by lighting the tea light.



Abstand zu brennbaren Gegenständen = min. 0,6m / 2 ft
Minimum lateral distance to burnable objects: min. 0,6m / 2 ft

Safety advice:

- 1. Never leave a burning candle unattended
- 2. Never burn a candle on or near anything that might catch fire
- 3. Keep candles out of the reach of children and pets
- 4. Blow out candles when you leave a room or home
- 5. Always use a fireproof base (e.g. ceramic plate)
- 6. Follow now all safety basic candle instructions on the back side as well

Kerzen Sicherheitshinweise /
candle safety instructions



Diese Sicherheitshinweise gelten für alle unsere Kerzenprodukte

These safety instructions apply to all of our candle products - If you have any questions, please contact us at www.13gramm.com



safety instructions please scan QR Code